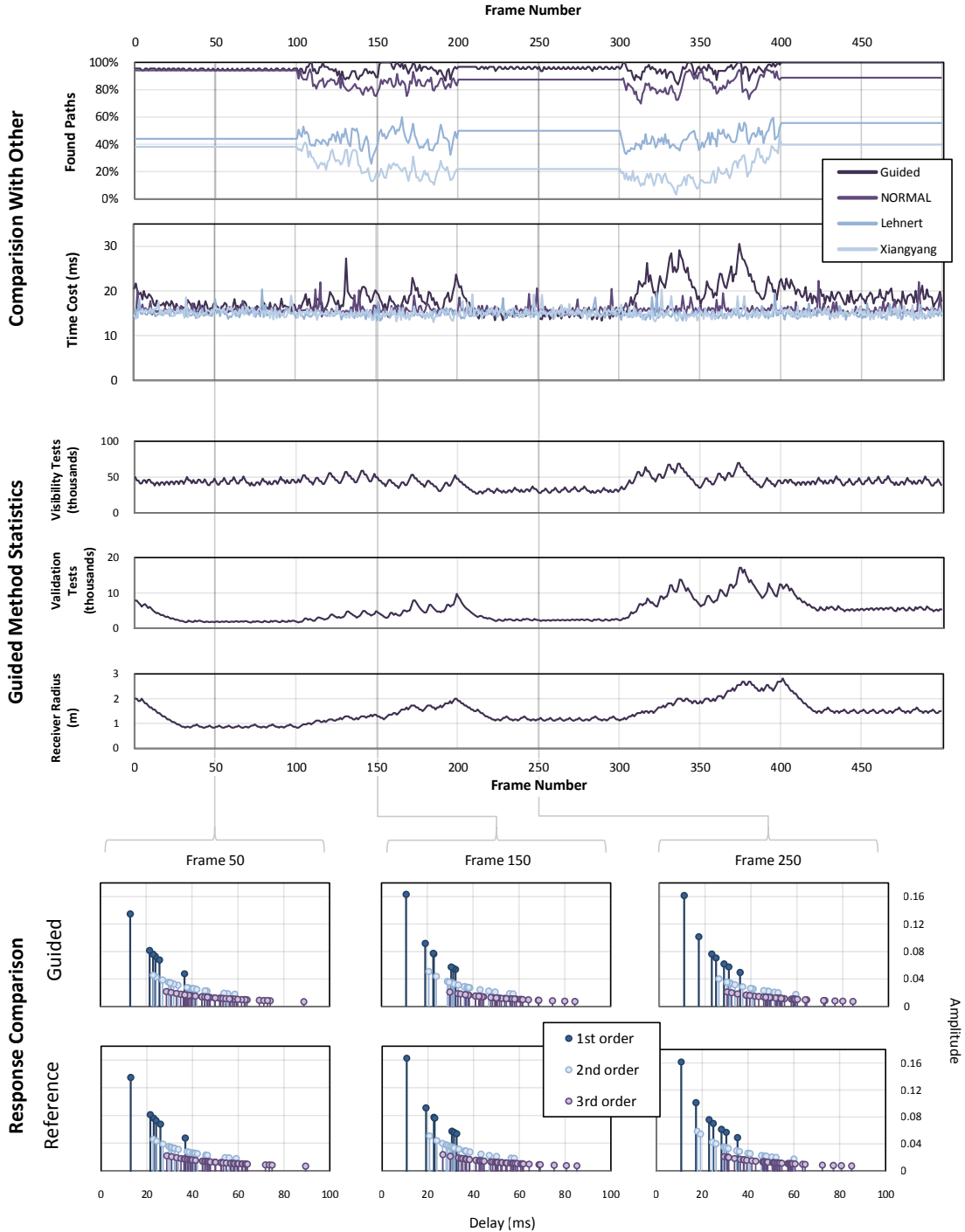


## APPENDIX A ANIMATION SEQUENCE IN MUSIC HALL



**Fig. 16: Music Hall Animation:** This figure compares various receiver size models to our guided method. During frames 100-199, the source moves to a new position; during frames 300-399, the receiver moves to a new position. The top charts show the accuracy and the time cost over the animation sequence. The three middle charts show number of validation and visibility tests conducted by our guided method, in addition to the radius of the receiver. The bottom charts show the impulse response of our method compared to an accurate image source simulation for frames 50, 150, and 250. Our method is more accurate than the others, while incurring a small additional time cost.