

Virtualized Traffic: Reconstructing Traffic Flows from Discrete Spatio-Temporal Data

Jur van den Berg

Jason Sewall

Ming Lin

Dinesh Manocha*

Department of Computer Science
University of North Carolina at Chapel Hill, USA

ABSTRACT

We present a novel concept, *Virtualized Traffic*, to reconstruct and visualize continuous traffic flows from discrete spatio-temporal data provided by traffic sensors or generated artificially to enhance a sense of immersion in a dynamic virtual world. Given the positions of each car at two recorded locations on a highway and the corresponding time instances, our approach can reconstruct the traffic flows (i.e. the dynamic motions of multiple cars over time) in between the two locations along the highway for immersive visualization of virtual cities or other environments. Our algorithm is applicable to high-density traffic on highways with an arbitrary number of lanes and takes into account the geometric, kinematic, and dynamic constraints on the cars. Our method reconstructs the car motion that automatically minimizes the number of lane changes, respects safety distance to other cars, and computes the acceleration necessary to obtain a smooth traffic flow subject to the given constraints. Furthermore, our framework can process a continuous stream of input data in real time, enabling the users to view virtualized traffic events in a virtual world as they occur.

Index Terms: I.6.3 [Computing Methodologies]: Simulation and Modeling—Applications

1 INTRODUCTION

With better sensing and scene reconstruction technology and more on-line software tools, such as Google Maps and Virtual Earth, for visualizing urban scenes, there is a growing need to introduce realistic street traffic in virtual worlds. One natural approach is to incorporate a traffic simulator in a virtual environment. There are numerous techniques to simulate macro- and microscopic traffic [10], including agent-based methods [9, 18], cellular automata [11, 5], mathematical modeling for continuous flows [16, 21, 19, 28, 2, 31], etc. While some simulate low-level behaviors and some aim to capture high-level flow appearance, the resulting simulations, however, usually do not correlate to the real traffic on the street level.

On the other hand, the current trend in addressing urgent problems due to traffic congestions in urban environments encourages increasingly more traffic monitoring mechanisms, ranging from various forms of traffic sensors (cameras, road sensors, GPS) to the use of mobile phones for car tracking. Inspired by *Virtualized Reality* [12], we propose a novel concept of *Virtualized Traffic* that generates a continuous traffic flow from discrete spatio-temporal data to create a realistic visualization of highway and street-level traffic for synthetic environments. The resulting visualization automatically reflects and correlates to the real-world traffic and also enables possibly new VR applications that can benefit from visual analysis of actual traffic events (e.g. accidents) based on sensor data.

Main Results: Given two locations along a highway, say A and B , we assume that the velocity and the lane of each car is known

*e-mail: {berg, sewall, lin, dm}@cs.unc.edu

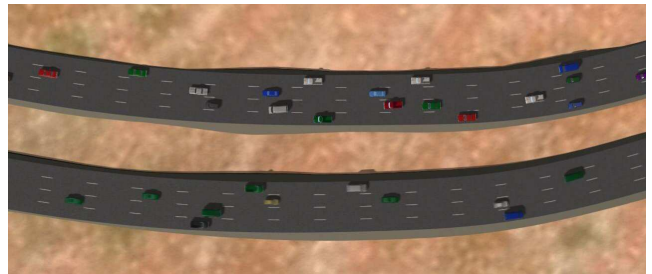


Figure 1: Images of highway traffic synthesized by our method. Our method computes trajectories one by one for a continuous stream of cars (of possibly high-density). The trajectories fit the boundary conditions at the sensor points, and obey the geometric, kinematic and dynamic constraints on the cars. The number of lane changes and the total amount of (de-)acceleration are minimized and the distance to other cars is maximized to obtain smooth and plausible motions.

at two corresponding time instances. The challenge is to reconstruct the continuous motion of multiple cars on the stretch of the highway in between the two given locations. We formulate it as a multi-robot planning problem, subject to spatial and temporal constraints. There are several key differences, however, between the traditional multi-robot planning problem and our formulation. First of all, we need to take into account the geometric, kinematic and the dynamic constraints of each car (though a subset of specialized algorithms have also considered these issues [6]). Second, in our formulation, not only the start time, but the arrival time of the cars is also specified. In contrast, the objective of previous literature has been for the robots to arrive at the goal location as soon as possible. Third, the domain that is dealt with here is an *open system*, i.e. the number of cars is not fixed. Instead, new cars can continuously enter the stretch of the highway to be visualized. This aspect requires

incremental update to the current solution as new cars arrive at the given location.

In this paper, we present a prioritized approach that assigns priorities to each car based on the relative positions of the cars on the road – cars in front have a higher priority. Then, in order of decreasing priority, we compute trajectories for the cars that avoid cars of higher priority for which a trajectory has already been determined.

To make the search space for each car tractable, we constrain the motions of the car to a pre-computed roadmap, which is a reasonable assumption as each car typically has a pre-determined location to travel to. The roadmap provides links for changing lanes and encodes the car’s *kinematic* constraints. Given such a roadmap, and a start and final state-time on the roadmap, we compute a trajectory on the roadmap that is compliant with the car’s *dynamic* constraints and avoids collisions with cars of higher priority. At each time step, the car either accelerates maximally, maintains its current velocity, or decelerates maximally. This approach discretizes the set of possible velocities and the set of possible positions as well, enabling us to compute in three-dimensional state-time grids along the links of the roadmap. Our algorithm searches for a trajectory that minimizes the number of lane changes and the amount of (de-)acceleration, and maximizes the distance to other cars to obtain smooth and realistic motions. We show that this approach can successfully reconstruct traffic flows for a large number of cars efficiently. Fig. 1 shows one of the challenging scenarios synthesized and visualized by our method.

Organization: The rest of this paper is organized as follows. First, we discuss related work in Section 2. In Section 3, we formally define the problem and a car’s geometric, kinematic and dynamic constraints. In Section 4, we discuss the details of our approach and present experimental results in Section 5. Finally, we conclude and discuss future work in Section 6.

2 RELATED WORK

In this section, we give a brief review of prior work first in traffic simulation, then in multi-agent planning as we extend some of the algorithms from robotics and adapt them here for our problem.

2.1 Traffic Simulation

The growing ubiquity of vehicle traffic in everyday life has generated considerable interest in models of traffic behavior, and a large body of research in the area has appeared in the last 60 years. The problem of traffic simulation has been very prominent in several fields — given a road network, a behavior model, and initial car states, how does the traffic in the system evolve? Such methods are typically designed to explore specific phenomena, such as jams and unstable, stop-and-go patterns of traffic, or to evaluate network configurations to aid in real-world traffic engineering.

Our approach does not address the classical problems of traffic simulation but instead *traffic reconstruction*, in which both the begin and end states of its cars are given. To better contrast our work against prior art, we give a brief overview of the commonly known methods for traffic simulation. For a more thorough review of the state of the art, see Helbing’s extensive survey [10].

One popular category of traffic simulation techniques is broadly termed *microscopic* simulation. This classification includes discrete agent-based methods, wherein each car is treated as a discrete autonomous agent with arbitrarily complex rules governing their behavior. Most agent-based methods use some form of the “car-following” set of rules as described in [9] and [18]. Some of the public-domain traffic simulation systems, such as NETSIM [4], INTEGRATION [1], and MITSIM [30], are implemented using the agent-based modeling framework.

The Nagel and Schreckenberg [11] applied cellular automata to the problem traffic simulation. The efficiency and simplicity of these models has led to a great deal of interest and extensions to

the Nagel-Schreckenberg model (see the survey in Chowdhury et al. [5] for a detailed review).

Traffic may also be treated as continuum and its evolution in time described by partial differential equations; this class of simulation methods is often called *macroscopic* simulation. Lighthill and Whitham [16] and Richards [21] were able to accurately capture a surprising number of traffic-related phenomena with a simple scalar nonlinear conservation law, and subsequent improvements by Payne [19] and Whitham [28] were able to describe more complicated states of traffic. Recently, the techniques described by Aw and Rascle [2] and Zhang [31] address some of the shortcomings of the Payne-Whitham model and provide concise description of traffic evolution. Unfortunately, these methods can be numerically challenging to handle due to the presence of discontinuities in the solution.

A third class of simulation methods, called *mesoscopic* methods, uses a continuum representation of traffic but uses Boltzmann-type mesoscale equations to traffic dynamics. This approach was pioneered by Prigogine and Andrews [20] and improved upon by Nelson et al. [17], Shvetsov and Helbing [23] and others.

There is also considerable work on using virtual environments for driving simulation [14, 3] and methods for modeling the vehicle behaviors and navigable paths [27, 7, 29].

2.2 Multi-Robot Planning and Coordination

Existing approaches to multi-robot planning can roughly be divided into two categories: *coordinated* planning and *prioritized* planning. Coordinated approaches compute a path in the composite configuration space of the robots, which is formed by the Cartesian product of the configuration spaces of the individual robots [15, 24, 22]. They allow for complete planners, but their running time is exponential in the number of robots. The performance can be increased by constraining the configuration space of the individual robots to a pre-planned path or roadmap [13], but the running time remains exponential in the number of robots.

Prioritized approaches incrementally construct a solution [8, 25]. Each of the robots is assigned a priority, and in order of decreasing priority the robots are picked. For each picked robot a trajectory is planned, avoiding collisions with the previously picked robots, which are considered as moving obstacles. Prioritized approaches are not complete, but the running time is only linear in the number of robots.

For the objective of traffic reconstruction, a coordinated approach will not apply. Not only would it computationally be infeasible, but coordinated approaches are difficult to apply in a setting where new robots (i.e. cars) continuously enter the scene without affecting motions of cars in the far past. A prioritized approach on the other hand, is suited well for our application. Priorities can naturally be assigned based on the relative positions of the cars on the road, as it is reasonable to assume that cars only react to cars in front of them.

3 PROBLEM DEFINITION

The problem is formally defined as follows. We are given a stretch of a highway between two points A and B of length L that has N lanes of a certain width. This highway is traversed by a continuous stream of cars. Of each car i we assume we get a tuple $(t_i^A, \ell_i^A, v_i^A, t_i^B, \ell_i^B, v_i^B)$ as data input from the sensors, where $t_i^A \in \mathbb{R}$ is the time at which car i passes point A , $\ell_i^A \in 1 \dots N$ is the lane in which car i is at point A , and $v_i^A \in \mathbb{R}^+$ is the velocity of car i at point A (and similarly for point B).

The task is to compute trajectories for the cars on the highway starting and arriving in the given lanes, at the given times, and at the given velocities. The trajectories should be computed such that the cars respect geometric constraints (e.g. respecting safety distance with each other), and such that the kinematic and dynamic

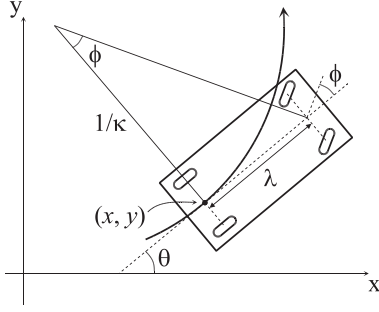


Figure 2: The kinematic model of a car; (x, y) and θ are the position, respectively the orientation of the car, λ is the distance between the front and rear axle, ϕ is the car's steering angle and κ is the curvature of the traversed path.

constraints on the cars are enforced (see below). Further, we want the reconstructed trajectories to look realistic, that is, the cars stay in their lane wherever possible, maintain sufficient distance to each other, and do not unnecessarily accelerate or decelerate.

3.1 Kinematics and Dynamics of a Car

A car can be conceptualized as a rectangle moving in the plane. Its configuration is defined by a position (x, y) , and an orientation θ (see Fig. 2). Let λ be the distance between the rear axle and the front axle of the car. The configuration transition equations of the car, in terms of path length s , are given by:

$$x'(s) = \cos \theta \quad (1)$$

$$y'(s) = \sin \theta \quad (2)$$

$$\theta'(s) = \frac{\tan \phi}{\lambda} = \kappa, \quad |\phi| \leq \phi_{\max} \quad (3)$$

where ϕ is the car's steering wheel angle, and κ the curvature of the traversed path. The steering wheel angle is bounded to reflect the car's minimum turning radius.

The above equations are the *kinematic constraints* on a car. They describe the paths a car can traverse. The *dynamic* constraints describe how such paths may be traversed over time t :

$$s'(t) = v, \quad 0 \leq v \leq v_{\max} \quad (4)$$

$$v'(t) = a, \quad |a| \leq a_{\max} \quad (5)$$

$$\phi'(t) = \omega, \quad |\omega| \leq \omega_{\max} \quad (6)$$

where v is the velocity of the car, a its acceleration and ω the speed with which the steering wheel is turned. We lower-bound the velocity of the car such that it can only move forward (which is realistic on a highway). Further, we bound the acceleration and the speed with which the steering wheel can be turned. Because of the discretization that is applied below, we choose symmetric bounds on the acceleration.

3.2 Discretization

To implement our traffic reconstruction method, we extend the approach presented by van den Berg and Overmars in [26] that plans a trajectory for a robot under kinodynamic constraints in environments with *multiple moving obstacles*. We adapt the same discretization of the search space. We review that discretization here, and describe it in terms of our problem definition. The first discretization step is to construct a roadmap for the car's configuration space that encodes the kinematic constraints on the car. Constraining the cars to move along the edges of the roadmap ensure that the car's kinematic constraints are enforced. To comply with the

car's dynamic constraints, we have to consider the *state space* of the car. To avoid the other cars in the environment, we extend the state space to the *state-time space*. In Section 4.1, we discuss how we construct a roadmap for the case of highway traffic reconstruction. Here, we describe how the state-space and the state-time space are discretized.

Let us first assume that the roadmap consists of a single path. The *state space* of the car then consists of pairs $\langle s, v \rangle$, where s is the position of the car along the path, and v the car's velocity. The state space is discretized into a grid by choosing a small time step Δt . At each time step, the car is allowed to either accelerate maximally, maintain its current velocity, or decelerate maximally. This gives the following state transition equations:

$$a \in \{-a_{\max}, 0, a_{\max}\} \quad (7)$$

$$v(t + \Delta t) = v(t) + a\Delta t \quad (8)$$

$$s(t + \Delta t) = s(t) + v(t)\Delta t + \frac{1}{2}a\Delta t^2 \quad (9)$$

They result in a regular two-dimensional grid of reachable states (see Fig. 3), where the spacings in the grid are $\Delta v = a_{\max}\Delta t$ along the v -axis, and $\Delta s = \frac{1}{2}a_{\max}\Delta t^2$ along the s -axis. From a given state $\langle s, v \rangle$, three other states are reachable: $\langle s + (2\frac{v}{\Delta v} + 1)\Delta s, v + \Delta v \rangle$, $\langle s + 2\frac{v}{\Delta v}\Delta s, v \rangle$ and $\langle s + (2\frac{v}{\Delta v} - 1)\Delta s, v - \Delta v \rangle$, each one associated with a different acceleration. This defines a directed graph in the discretized state space which is called the *state graph*.

To define the state graph for the entire roadmap rather than a single path, state grids along each of the edges of the roadmap are connected at the vertices of the roadmap, such that the car can choose among all of the outgoing edges when it encounters a vertex. As can be seen in Fig. 3, only half of the states in the state grid are reachable. So, in order to connect the state grids smoothly at the vertices, each of the edges of the roadmap is subdivided into steps of the largest possible length smaller than Δs , such that the edge is subdivided exactly into an *even* number of steps. As a result, there is a finite number of reachable positions in the roadmap. For all of these positions, the velocity is lower and upper bounded by Equation (4). If the roadmap edge has curvature, the upper bound of the velocity may be further tightened by the dynamic constraint of Equation (6). States outside the velocity bounds are defined not to be part of the state graph. As a result, the total state graph contains a finite number of states, but –in contrast to [26]– we do *not* construct the state graph explicitly.

To compute over the state graph while avoiding collisions with other cars, the time dimension is added to the discretized state space, forming a three-dimensional *state-time space* along each of the edges of the roadmap (see Fig. 3). It consists of pairs $\langle q, t \rangle$, where $q = \langle s, v \rangle$ is a state contained in the state graph, and t a time value. The time axis is discretized by the time step Δt . The other cars moving on the highway transform to static obstacles in the state-time space. They are *cylindrical* along the v -dimension, as the car's velocity does not influence its collision status.

Like the state graph is defined on the discretized state space, the *state-time graph* is defined on the discretized state-time space. It is a directed acyclic graph, that contains a transition from state-time $\langle q, t \rangle$ to $\langle q', t + \Delta t \rangle$ if q' is a successor of q in the state graph. The task is to compute a trajectory through the state-time graph from a given start state-time $\langle q_{\text{start}}, t_{\text{start}} \rangle$ to a given goal state-time $\langle q_{\text{goal}}, t_{\text{goal}} \rangle$. The state-time graph is explored *implicitly* during the search for a trajectory.

4 RECONSTRUCTING TRAFFIC

In this section we discuss how we reconstruct the traffic from the acquired sensor data, given the discretization of the search space as defined above.

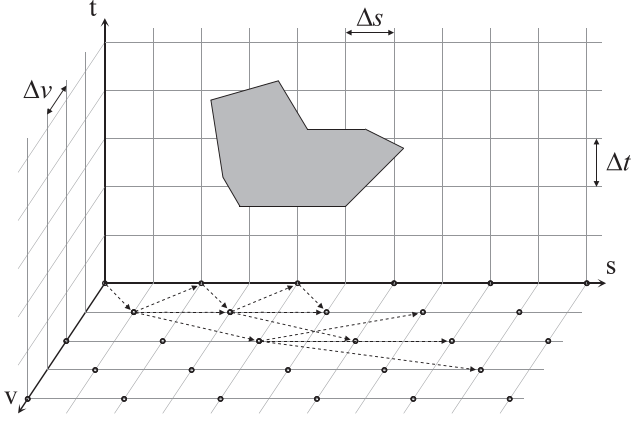


Figure 3: The three-dimensional state-time grid along a single edge of the roadmap. Obstacles (gray) are cylindrical along the v -dimension. A part of the state graph (or equivalently, the projection of the state-time graph) is shown using dashed arrows on the sv -plane. Only the grid points marked by the dots are reachable. Each transition takes one time step.

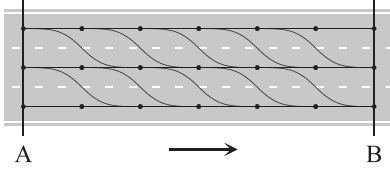


Figure 4: A roadmap constructed for a highway with three lanes. The highway was subdivided into six segments. The thick dots are the vertices of the roadmap. Only lane changes to the right of the length of two segments are shown here.

4.1 Constructing the Roadmap

As explained above, the cars are constrained to move over a preprocessed roadmap to make the configuration space of a car tractable. We construct this roadmap as follows. First, we subdivide the highway into a M segments of equal length. For each lane of the highway, we place a roadmap vertex at the end of each segment (see Fig. 4). This gives a $M \times N$ grid of roadmap vertices, where N is the number of lanes. Each vertex (i, j) is connected by an edge to the next vertex $(i + 1, j)$ in the same lane. These edges allow cars to stay in their lane and move forward. To allow for lane changes, we also connect vertices of neighboring lanes. Each vertex (i, j) is connected to vertices $(i + a, j + 1), \dots, (i + b, j + 1)$ and $(i + a, j - 1), \dots, (i + b, j - 1)$. Here a and b denote the minimum and maximum length (in number of segments) of a lane change, respectively. The short lane changes are useful at lower velocities, the longer ones at higher velocities.

When adding the edges for lane-changing, we have to make sure that they are “smooth”. That is, they should obey the kinematic constraints of a car, and should be traversable without abrupt steering wheel motions. Let us look more closely at the constraint on the speed with which the steering wheel is turned given in Equation (6). It translates into the following bound on the *curvature* derivative:

$$|\phi'(t)| \leq \omega_{\max} \Leftrightarrow |\kappa'(t)| \leq \frac{\omega_{\max}}{\lambda} \Leftrightarrow |\kappa'(s)| \leq \frac{\omega_{\max}}{v\lambda} \Leftrightarrow v \leq \frac{\omega_{\max}}{|\kappa'(s)|\lambda} \quad (10)$$

In other words: the smaller the curvature derivative (with respect to path length s), the higher the velocity with which this path can be traversed. Hence, we look for lane change curves with the smallest possible (absolute) curvature derivative. Let us look at a lane

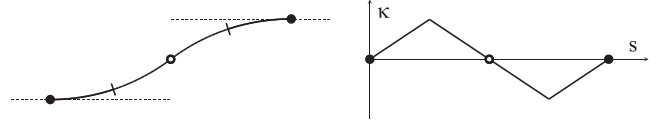


Figure 5: A lane change curve (left) between two points consists of four clothoid curves, i.e. curves with constant curvature derivative (see right).

change to the left (see Fig. 5). Note that a lane change curve between two points is symmetric in its midpoint. At its midpoint, the curvature (and the steering wheel angle) must be zero, as it is the switching point from steering to the left to steering to the right. The curvature is also zero at its start and end points. Hence, the curve in between the start point and the midpoint consists of two curves, one with maximal positive curvature derivative, the other with maximal negative curvature derivative. A curve with constant curvature derivative is well known to be a *clothoid*, so the total lane change edge consists of four clothoid curves.

The roadmap resulting by using the above method is valid for cars with any value of λ , so we need to construct a roadmap only once, and can use it for all cars.

4.2 Trajectory for a Single Car

Given a roadmap as constructed above and the state-time graph as defined in the previous section, we describe how we can compute a trajectory for a single car, assuming that the other cars are moving obstacles of which we know their trajectories. How we reconstruct the traffic flows for multiple cars is discussed in below.

A straightforward approach for searching a trajectory in the state-time graph is the A*-algorithm. It builds a *minimum cost tree* rooted at the start state-time and biases its growth towards the goal. To this end, A* maintains the leafs of the tree in a priority queue Q , and sorts them according to their f -value. The function $f(\langle q, t \rangle)$ gives an estimate of the cost of the minimum cost trajectory from the start to the goal via $\langle q, t \rangle$. It is computed as $g(\langle q, t \rangle) + h(\langle q, t \rangle)$ where $g(\langle q, t \rangle)$ is the cost it takes to go from the start to $\langle q, t \rangle$, and $h(\langle q, t \rangle)$ a lower-bound estimate of the cost it takes to reach the goal from $\langle q, t \rangle$. A* is initialized with the start state-time in its priority queue, and in each iteration it takes the state-time with the lowest f -value from the queue and *expands* it. That is, each of the state-time’s successors in the state-time graph is inserted into the queue if they have not already been reached by a lower-cost trajectory during the search. This process repeats until the goal state-time is reached, or the priority queue is empty. In the latter case, no valid trajectory exists. The algorithm is given in Algorithm 1.

Algorithm 1 A*($q_{\text{start}}, t_{\text{start}}, q_{\text{goal}}, t_{\text{goal}}$)

- 1: $g(\langle q_{\text{start}}, t_{\text{start}} \rangle) \leftarrow 0$
 - 2: Insert $\langle q_{\text{start}}, t_{\text{start}} \rangle$ into Q
 - 3: **while** Q is not empty **do**
 - 4: Pop the element $\langle q, t \rangle$ with lowest f -value from Q
 - 5: **if** $q = q_{\text{goal}}$ **and** $t = t_{\text{goal}}$ **then return success!**
 - 6: **for all** successors q' of q in the state graph **do**
 - 7: $c \leftarrow$ cost of edge between $\langle q, t \rangle$ and $\langle q', t + \Delta t \rangle$
 - 8: **if** $g(\langle q', t + \Delta t \rangle) > g(\langle q, t \rangle) + c$ **then**
 - 9: $\text{bp}(\langle q', t + \Delta t \rangle) \leftarrow \langle q, t \rangle$
 - 10: $g(\langle q', t + \Delta t \rangle) \leftarrow g(\langle q, t \rangle) + c$
 - 11: Insert or update $\langle q', t + \Delta t \rangle$ in Q
 - 12: Trajectory does not exist; **return failure**
-

In [26] the A*-algorithm was used to find a *minimal-time trajectory*. That is, only a goal state is specified, and the task is to arrive there as soon as possible. This makes it easy to focus the search towards the goal; the cost of a trajectory is simply defined as its length

(in terms of time). However, in our case the arrival time is specified as well, so we know in advance how long our trajectory will be. Therefore, we cannot use time as a measure in our cost function. Instead, we let the cost of a trajectory T depend on the following criteria, in order to obtain smooth and realistic trajectories:

- The number of lane changes $X(T)$ in the trajectory.
- The total amount $A(T)$ of acceleration and deceleration in the trajectory.
- The accumulated cost $D(T)$ of driving closer than a preferred minimum $d_{\text{limit}} > 0$ to other cars.

More precisely, the total cost of the trajectory T is defined as follows:

$$\text{cost}(T) = c_X X(T) + c_A A(T) + c_D D(T) \quad (11)$$

where c_X , c_A and c_D are weights specifying the relative importance of each of the criteria. $A(T)$ and $D(T)$ are defined as follows:

$$A(T) = \int_T |v'(t)| dt \quad (12)$$

$$D(T) = \int_T \max\left(\frac{d_{\text{limit}}}{d(t)} - 1, 0\right) dt \quad (13)$$

where $v(t)$ is the velocity along the trajectory as a function of time, and $d(t)$ is the distance (measured in terms of time) to the nearest other car on the highway as a function of time.

The distance $d(t)$ to other cars on the highway given a position s in the roadmap and a time t is computed as follows. Let t' be the time closest to t at which a car configured at s would be in collision with another car, given the trajectories of the other cars. Then, $d(t) = |t - t'|$. We obtain this distance efficiently by – prior to determining a trajectory for the car – computing for all positions in the roadmap during what time intervals it is in collision with any of the other cars. Now, $d(t)$ is simply the distance between t and the nearest collision interval at s . If t falls within an interval, the car is in collision and the distance is zero. As a result, the above cost function would evaluate to infinity.

In the A*-algorithm, we evaluate the cost function per edge of the state-time graph that is encountered during the search. The edge is considered to contain a lane change if a lane-change edge of the roadmap is entered. The total cost $g(\langle q, t \rangle)$ of a trajectory from the start state-time to $\langle q, t \rangle$ is maintained by accumulating the costs of the edges the trajectory consists of. The lower bound estimate $h(\langle q, t \rangle)$ of the cost from $\langle q, t \rangle$ to the goal state-time $\langle q_{\text{goal}}, t_{\text{goal}} \rangle$ is computed as follows:

$$v_{\text{avg}} = \frac{x(q) - x(q_{\text{goal}})}{t_{\text{goal}} - t} \quad (14)$$

$$h(\langle q, t \rangle) = c_X |\text{lane}(q) - \text{lane}(q_{\text{goal}})| + c_A (|v(q) - v_{\text{avg}}| + |v(q_{\text{goal}}) - v_{\text{avg}}|) \quad (15)$$

where v_{avg} is the average velocity of the trajectory from $\langle q, t \rangle$ to $\langle q_{\text{goal}}, t_{\text{goal}} \rangle$, and $x(q)$, $\text{lane}(q)$ and $v(q)$ are respectively the the position along the highway, the lane and the velocity at state q . If $v_{\text{avg}} > v_{\text{max}}$, we define $h(\langle q, t \rangle) = \infty$.

An advantage of the goal time being specified is that we can apply a bidirectional A*, in which a tree is grown from both the start state-time and the goal state-time in the reverse direction until a state-time has been reached by both searches. This greatly reduces the number of states explored and hence the running time.

Streaming: Let us assume that we acquire data from each of the sensors A and B whenever a car passes by. Obviously, for each car, we first acquire data from A and then from B . We order the cars in a

planning queue sorted by the time at which the cars pass sensor A . The queue continuously grows when new sensor data arrives from sensor A . Now, continually, we compute a trajectory for the car at the front of the queue when its data from sensor B has arrived. To this end, we use the algorithm of the previous section, such that the car avoids other cars for which a trajectory has previously been computed (which is initially none). The start state-time and the goal state-time are directly derived from the data acquired at sensor A and B respectively. They are rounded to the nearest point in the discretized state-time space. This procedure repeats indefinitely.

Streaming Property: The reconstructed trajectories can be regarded as a “movie” of the past, or as a function $R(t)$ of time. As new trajectories are continually computed, the function $R(t)$ changes continuously. However, the above scheme guarantees that $R(t)$ is *final* for time t if $(\forall i : t_i^A < t : t_i^B < t_{\text{cur}})$, where t_{cur} is the current “real world” time. “Final” means that $R(t)$ will not change anymore for time t when trajectories are determined for new cars. In other words, we are able to “play back” the reconstruction up till time t as soon as all cars that passed sensor A before time t have passed sensor B . We call this the *streaming* property; it allows us to stream the reconstructed traffic at a small delay.

Real Time Requirements: In order for our system to run in *real time*, that is, so that the computation does not lag behind new data arriving (and the planning queue grows bigger and bigger), we need to make sure that reconstruction takes on average no more time than the time in between arriving cars. For instance, if a new car arrives every second, we need to be able to compute trajectories within a second (on average) in order to have real-time performance.

4.3 Qualitative Analysis

Prioritization: The above scheme implies a static prioritization on the cars within a given pair of sensor locations. Cars are assigned priorities based on the time they passed sensor A , and in order of decreasing priority trajectories are calculated that avoid cars of higher priority (for which trajectories have previously been determined). This is justified as follows: in real traffic drivers mainly react to other cars in *front* of them, hardly to cars behind. This is initially the case: a newly arrived car i has to give priority to all cars in front of it. On the other hand, car i may overtake another car j , after which it still has to give priority to j . However, it is not likely that once car i has overtaken car j that both cars will ‘interact’ again, and that car j influences the remainder of the trajectory of car i . This can be seen as follows. If we assume that cars travel on a trajectory with a constant velocity (this is what we try to achieve by the optimization criteria of Equation (12)), each pair of cars only interact (i.e. one car overtakes the other) at most *once*.

In fact, in a real-world application it is to be expected that multiple consecutive stretches of a highway are being reconstructed, each bounded by a pair of a series of sensors A, B, C, \dots placed along the highway. If car i overtakes car j in stretch AB , then for reconstructing the stretch BC , car i has gained priority over car j . So, when regarded from the perspective of multiple consecutive stretches being reconstructed, there is an implicit *dynamic* prioritization at the resolution of the length of the stretches.

Traffic Phenomena: This viewpoint of multiple connected stretches is very important when analyzing the traffic behavior seen in the reconstructions and streaming real-time data. For each stretch individually, our algorithm attempts to reconstruct as smooth a motion as possible. So, it is unlikely to see traffic jam phenomena emerge at resolutions lower than the stretch length in the reconstructions. However, in the more global scale over multiple stretches, these phenomena are observable, as the algorithm tries to fit the data. This can be viewed analogous to the Nyquist-Shannon sampling theorem, stating that frequencies higher than the sampling resolution cannot be captured.

Noise Sensitivity: Our method is hardly sensitive to noise in the

data. This can be understood by the fact that sensed passing times and velocities at the sensors are rounded to the nearest point on the discretized time-axis and velocity-axis respectively to initialize the reconstruction algorithm.

5 EXPERIMENTAL RESULTS

We have implemented our method and experimented on various challenging scenarios.

5.1 Quantitative Results

In our first experiments we use a highway with $N = 4$ lanes of $L = 1000$ meters length. Lane change curves are 50 meters long. For the cars, we set $a_{\max} = 3m/s^2$, $v_{\max} = 35m/s$ (close to 80 MPH), $d_{\text{limit}} = 1s$ and $\omega_{\max} = 1rad/s$. We set the time step Δt at $0.5s$, which gives $\Delta v = 1.5m/s$ and $\Delta s = 0.375m$ for the discretization of the state space. As a result, the roadmap consists of 41570 discrete positions.

To stress test our work on various scenarios, the data was randomly generated. For each car i we pick a random start time t_i^A from the interval $[t_{i-1}^A, t_{i-1}^A + 2/(\rho N)]$, where ρ is the traffic density (i.e. the number of cars per second per lane). The end time t_i^B is selected as $t_i^A + L/V$, where V is the average velocity randomly picked between 20 and 30m/s. The start and end lane are randomly chosen as well, and the start and end velocities are fixed at 22.5m/s.

Dense Traffic: In our first experiment, we set $\rho = 1/2$, which gives fairly dense traffic (a new car enters the four-lane highway every $1/(\rho N) = 1/2$ seconds on average). Given the fact that the average velocities are relatively high and far between (between 20 and 30m/s) and the start and end lanes are randomly chosen, this is a challenging example. Such data is not likely to occur in practice. We compute trajectories for 500 cars. In the supplementary video, the reconstructed traffic can be viewed. Because of the relatively large differences in average velocities of the cars, it is interesting to see that some fast cars really race through the traffic to reach the “goal” (i.e. the end of the highway) in time.

Performance: In Fig. 6(a) we plot the average running time of the first x cars for this experiment. What can be seen from the chart is that the compute time does not increase much when more cars have previously been considered. Only the running times for the very first cars are faster, because they do not have to avoid any other cars. For the rest of the cars, the traffic density is more or less equal. In this *worst* case scenario, the average running time over all 500 cars was 4.6 seconds. For real-time data streaming, the reconstruction is faster and can be done at interactive rates. However, the search space (the state-time space) is big, and focusing the A*-search to the goal can be hard as we are not searching for a time-minimal trajectory. In general, a low-cost trajectory is found quickly, whereas a high-cost trajectory can take more time before it is found. This is because the A*-search first exhausts all the possible low-cost trajectories, before it expands leafs of the search tree with a high cost.

Effect of Road Length: In our subsequent experiments, we varied the major parameters, while keeping the others equal. In Figs. 6(b), (c) and (d) we see how the computing time varies with the highway length, the number of lanes, and the traffic density, respectively. We see that the reconstruction time clearly increases as the length of the highway increases. In fact, the curve shown is a perfect cubic function (i.e. a polynomial of degree 3). This can be explained as follows. As we keep the average velocity constant, the length (in terms of time) of the trajectories increases with the length of the highway. As the A* algorithm searches in a *three*-dimensional state-time space (see Fig. 3), the volume of the search tree is expected to grow cubically with the depth of the tree (i.e. the number

of time steps).

The Number of Lanes: We see that the reconstruction time increases only little when the number of lanes increases. In principle, twice the number of lanes gives twice as large a search space. However, the length of the trajectories in terms of time remains constant regardless of the number of lanes. Also, more lanes gives more space to find a low-cost trajectory, which are found quicker than high-cost trajectories.

Traffic Density: The density of the traffic seems to have a more or less linear relationship with the computing time: the lower the density, the lower the computing time. When there is hardly any traffic, each car can find a low-cost trajectory quickly. However, for very high density the computing time seems to decrease. This is due to the fact that the large amount of traffic constrains the number of possible trajectories so much, that the search-tree does not grow very wide.

Impact of Time Steps: We note that over all experiments, we have kept the time step Δt constant at a low 0.5s, but we note that the running time decreases *quartically* (i.e. $\sim 1/\Delta t^4$) when the time step increases. This is because that the search space is three-dimensional, and the spacings in the discretized grid are Δt for the time axis, $\sim \Delta t$ for the v -axis, and $\sim \Delta t^2$ for the s -axis (see Fig. 3). So, for instance, for a time step of $\Delta t = 1s$, which is fine for most practical situations, the computing times are ± 16 times less than the ones reported for these experiments.

Real-time Data Streaming: Given a density of ρ , the real time requirement (see Section 4.2) states we need to calculate within $1/(\rho N)$ time on average per car. The time step Δt can be tuned to achieve this requirement. We note that for $\Delta t = 1s$, the experiments with $L = 1000m$, $\rho = 1/2$ and $N = 4$ can be run in real-time. We note that the time step should obey $\Delta t < 1/\rho$ to capture high density traffic. Otherwise the time value of multiple cars entering the same lane of the highway will be rounded to the same point on the time-axis.

5.2 Scenarios

We further applied our method to two specific scenarios. One is a cloverleaf highway interchange (see Fig. 7). In this case, we have a sensor at each of the four arms of the intersection. Cars can enter and leave the intersection at any sensor point and our algorithm compute their trajectories accordingly. In our example we used highways of 1000m length with four lanes, and a density of $\rho = 1/2$. As can be seen in Fig. 7 and the supplementary video, the reconstruction gives plausible and smooth traffic even in the case of a cloverleaf intersection.

The next scenario actually consists of multiple consecutive stretches, as we discussed in Section 4.3. In our example, we place four sensors A, B, C and D along a linear highway with four lanes such that the stretch AB is 400m, BC is 200m and CD is 400m long. We generated the data such that the average velocity of the cars in the first and the last section was 20m/s and in the middle 5m/s to simulate a traffic jam scenario. The traffic was reconstructed independently for each section of the road, and afterwards concatenated together in a single visualization. As can be seen in Fig. 8 and the supplementary video, the traffic jam can be clearly reconstructed by our method.

6 DISCUSSION AND FUTURE WORK

In this paper, we have presented a novel concept of *Virtualized Traffic*, in which traffic needs to be reconstructed from discrete data obtained by sensors placed alongside a highway or street. We have presented an algorithm to determine the trajectories for multiple cars that also allows *streaming* real-world traffic data in *real time* to visualize traffic as the data comes in. We have adapted a prioritized method. In general, this approach does not guarantee that a

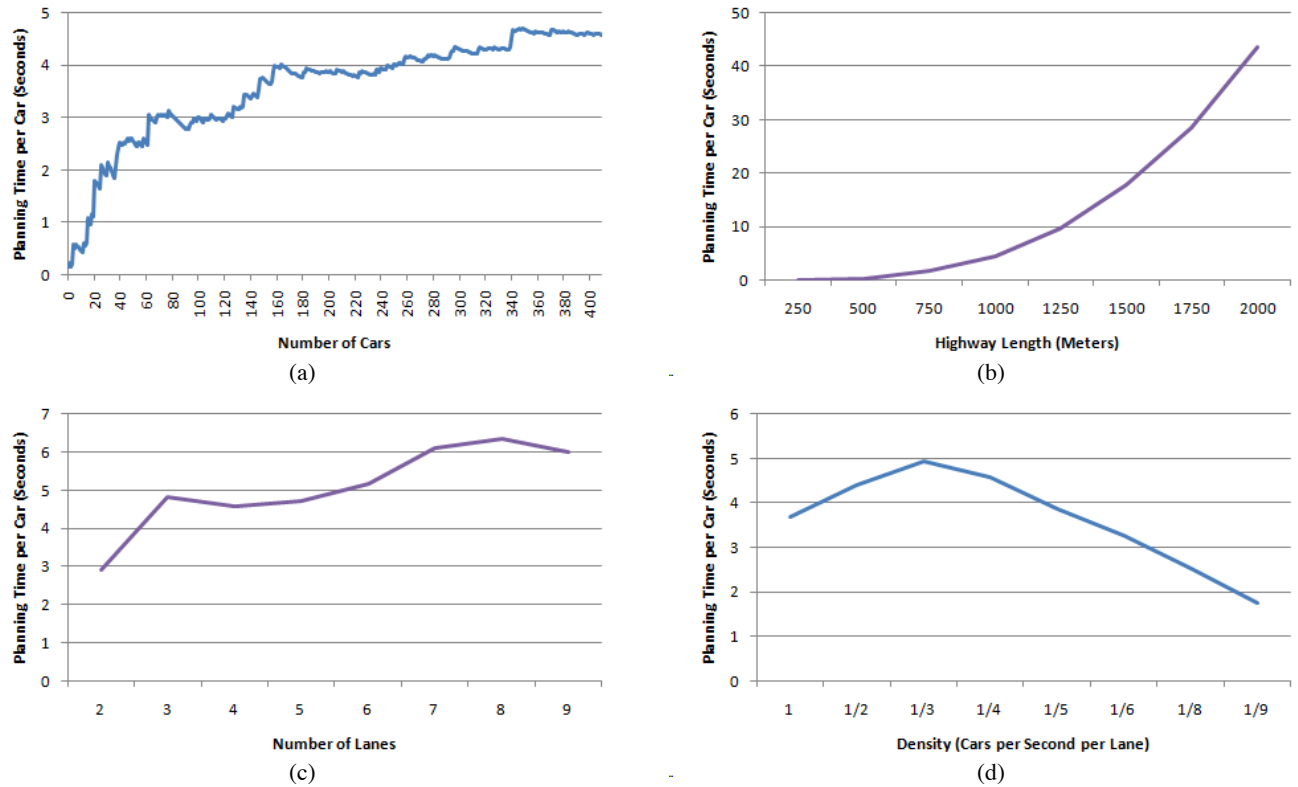


Figure 6: (a) The average compute time of the first x cars in our experiment ($L = 1000m, N = 4, \rho = 1/2$). (b) The average compute time as a function of the highway length ($N = 4, \rho = 1/2$). (c) The average compute time as a function of the number of lanes ($L = 1000m, \rho = 1/2$). (d) The average compute time as a function of the density ($L = 1000m, N = 4$).

solution to the constraints will be found if one exists. However, the approach fails only in theoretically pathological examples, or when inconsistent data is provided. Based on our experiments, we do not expect this to be an issue for real-world data.

A number of improvements may be made to our current implementation. First, our implementation currently only supports accelerating either maximally, minimally or not at all at each time step. The maximal acceleration is the same regardless of the current velocity of the car. In reality though, the maximal acceleration degrades more or less linearly with the velocity. So, to enforce more realistic constraints and generate smoother trajectories, an improvement is to include a more diverse set of possible accelerations, and bound the acceleration based on the current velocity.

In our current discretization of the state-time space, we choose a fixed time step, which gives a discrete set of reachable positions and velocities as well. However, traffic usually involves high-speed motion, so to obtain more resolution in the discretization at large velocities, we may instead consider choosing a fixed amount of traversed distance, and derive the velocities and times accordingly.

We have shown in this paper that our framework is applicable to complex highway scenarios, including cloverleaf intersections and traffic jams. An interesting extension is to the application to intersections with traffic lights or stop signs, and the entire roadmaps of streets in urban/suburban environments.

REFERENCES

- [1] S. Algers, E. Bernauer, M. Boero, L. Breheret, C. D. Taranto, M. Dougherty, K. Fox, and J. F. Gabard. Smartest project: Review of micro-simulation models. *EU project No: RO-97-SC*, 1059, 1997.
- [2] A. Aw and M. Rascle. Resurrection of “second order” models of traffic flow. *SIAM Journal of Applied Math*, 60(3):916–938, 2000.
- [3] S. Bayarri, M. Fernandez, and M. Perez. Virtual reality for driving simulation. *Commun. ACM*, 39(5):72–76, 1996.
- [4] A. Byrne, A. de Laski, K. Courage, and C. Wallace. Handbook of computer models for traffic operations analysis. Technical Report FHWA-TS-82-213, Washington, D.C., 1982.
- [5] D. Chowdhury, L. Santen, and A. Schadschneider. Statistical Physics of Vehicular Traffic and Some Related Systems. *Physics Reports*, 329:199, 2000.
- [6] C. M. Clark, T. Bretl, and S. Rock. Applying kinodynamic randomized motion planning with a dynamic priority system to multi-robot space systems. *IEEE Aerospace Conference Proceedings*, 7:3621–3631, 2002.
- [7] J. Cremer, J. Kearney, and P. Willemsen. Directable behavior models for virtual driving scenarios. *Trans. Soc. Comput. Simul. Int.*, 14(2):87–96, 1997.
- [8] M. Erdmann and T. Lozano-Pérez. On multiple moving objects. *Algorithmica*, 2:477–521, 1987.
- [9] D. L. Gerlough. *Simulation of freeway traffic on a general-purpose discrete variable computer*. PhD thesis, UCLA, 1955.
- [10] D. Helbing. Traffic and related self-driven many-particle systems. *Reviews of Modern Physics*, 73(4):1067–1141, 2001.
- [11] Kai Nagel and Michael Schreckenberg. A cellular automaton model for freeway traffic. *Journal de Physique I*, 2(12):2221–2229, dec 1992.
- [12] T. Kanade, P. Rander, and P. Narayanan. Virtualized reality: Constructing virtual worlds from real scenes. *IEEE MultiMedia*, 4(1):34–47, 1997.
- [13] K. Kant and S. Zucker. Toward efficient planning: the path-velocity decomposition. *International Journal of Robotics Research*, 5(3):72–89, 1986.
- [14] J. Kuhl, D. Evans, Y. Papeis, R. Romano, and G. Watson. The iowa driving simulator: An immersive research environment. *Computer*, 28(7):35–41, 1995.



Figure 7: Images from our cloverleaf scenario ($L = 4 \times 1000m, N = 4, \rho = 1/2$). There are sensors at each of the arms of the cloverleaf intersection. Cars can enter and leave the intersection at any sensor and our algorithm computes their trajectories accordingly.

[15] S. LaValle and S. Hutchinson. Optimal motion planning for multiple robots having independent goals. *IEEE Transactions on Robotics and Automation*, 14(6):912–925, 1998.

[16] M. J. Lighthill and G. B. Whitham. On kinematic waves. ii. a theory of traffic flow on long crowded roads. *Proceedings of the Royal Society of London. Series A, Mathematical and Physical Sciences (1934-1990)*, 229(1178):317–345.

[17] P. Nelson, D. Bui, and A. Sopasakis. A novel traffic stream model deriving from a bimodal kinetic equilibrium. In *Proceedings of the 1997 IFAC meeting, Chania, Greece*, pages 799–804, 1997.

[18] G. Newell. Nonlinear effects in the dynamics of car following. *Operations Research*, 9(2):209–229, 1961.

[19] H. J. Payne. *Models of freeway traffic and control*. 1971. ID: 29690330.

[20] I. Prigogine and F. C. Andrews. A Boltzmann like approach for traffic flow. *Operations Research*, 8(789), 1960.

[21] P. I. Richards. Shock waves on the highway. *Operations research*, 4(1):42, 1956. doi: pmid:.

[22] G. Sánchez and J. Latombe. Using a PRM planner to compare centralized and decoupled planning for multi-robot systems. In *Proc. IEEE Int. Conf. on Robotics and Automation*, pages 2112–2119, 2002.

[23] V. Shvetsov and D. Helbing. Macroscopic dynamics of multilane traf-

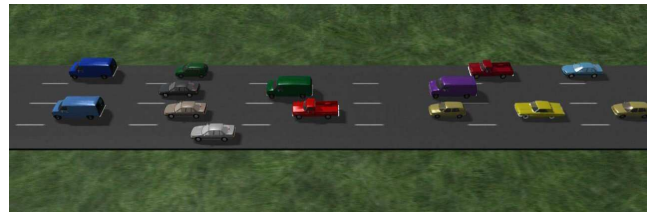


Figure 8: Images from our traffic jam scenario ($L = \{400m, 200m, 400m\}, N = 4, \rho = 1/2$). The traffic of three consecutive stretches of a highway are reconstructed independently, and afterwards concatenated in a single visualization. In order to simulate a traffic jam, we generated the data such that the average velocity in the middle section was much less than in the other two.

fic. *Physical Review E*, 59(6):6328–6339, 1999.

[24] P. Švestka and M. Overmars. Coordinated path planning for multiple robots. *Robotics and Autonomous Systems*, 23(3):125–152, 1998.

[25] J. van den Berg and M. Overmars. Prioritized motion planning for multiple robots. In *Proc. IEEE/RSJ Int. Conf. on Intelligent Robots and Systems*, pages 2217–2222, 2005.

[26] J. van den Berg and M. Overmars. Kinodynamic motion planning on roadmaps in dynamic environments. In *Proc. IEEE/RSJ Int. Conf. on Intelligent Robots and Systems*, pages 4253–4258, 2007.

[27] H. Wang, J. Kearney, J. Cremer, and P. Willemsen. Steering behaviors for autonomous vehicles in virtual environments. In *Proc. IEEE Virtual Reality Conf.*, pages 155–162, 2005.

[28] G. B. Whitham. *Linear and nonlinear waves*. Wiley, New York, 1974. ID: 815118.

[29] P. Willemsen, J. Kearney, and H. Wang. Ribbon networks for modeling navigable paths of autonomous agents in virtual environments. *IEEE Transactions on Visualization and Computer Graphics*, 12(3):331–342, 2006.

[30] Q. Yang and H. Koutsopoulos. A Microscopic Traffic Simulator for evaluation of dynamic traffic management systems. *Transportation Research Part C*, 4(3):113–129, 1996.

[31] H. M. Zhang. A non-equilibrium traffic model devoid of gas-like behavior. *Transportation Research Part B: Methodological*, 36(3):275–290, March 2002.